



CORPORATE

**Deane.**<sup>®</sup>  
Apparel





## WELCOME TO DEANE

Dressing has always been an important aspect of how we express ourselves. The clothes we wear to work are no different.

Whether we've chosen them ourselves or they're part of a uniform which has been chosen on our behalf; we want to feel enhanced and empowered, we want to feel like we're putting our best foot forward and we want to feel like ourselves.

At the same time, our work lives and our non-work lives have become more entwined than ever. We work remotely. We work across time-zones. We video conference. We work flexibly. We are always connected.

More so than ever, a working wardrobe needs to feel contemporary, fresh and packed full of choice. Deane's latest range mixes the

traditional with the less traditional. A beautiful wool blend suit or a t-shirt, blazer and pair of chinos. Flexibility, modernity and importantly, clothes that people want to wear.

Notwithstanding the qualities Deane has become known for, we offer a wide size range, fits & fabrics that take into consideration the range of bodies and shapes we are proud to enhance and empower.

We have an ethical supply chain, robust quality standards and of course our team of experts who are passionate about bringing your team of people to life through their work wardrobe.

*Talk to us now!*





# CONTENTS

06

Customisation

08

Corporate Social  
Responsibility

10

Shirts & Tops

40

Corporate Casual

46

Essence Suiting

56

Chino Suiting

62

Woolblend Suiting

70

Soft Suiting

74

Warmth

82

Hospitality

88

Healthcare

112

Directory

126

Size Guide





# THE TEAM LOOK

Our extensive range of stock service clothing is just the start of creating a cohesive uniform that your staff will love wearing.

Applying your brand can be the most important part, or simply the finishing touch in building a great uniform that your customers recognise as uniquely yours. Talk to our team about the different customisation options available.



## Custom Embroidery

With an onsite embroidery team who can digitise your logo then apply it to almost all of our garments, embroidery is a simple and cost effective way to add something special to your uniform which will last the life of the garment.

## Custom Design

In addition to customising our stock service range of garments, our team can also design, develop and manufacture your own unique garments if volume and budget permits.

## Customised Tape & Woven Labels

Tapes and woven labels sewn into garments can give the feel of a premium, custom item without the expense. Just another option to subtly overlay your brand identity onto your uniform.

## Screen & Digital Printing

For a more graphic, impactful statement screen and digital printing can add an entirely different dimension to your uniform.



# CORPORATE SOCIAL RESPONSIBILITY

Because there's always a better way

We're on a journey towards greater sustainability and social responsibility because this big beautiful planet is home to all of us. We recognise a duty of care to the environment and to the people who share it.

Deane Apparel isn't new to sustainability; our garments have always been designed and constructed to last, ensuring longevity and reducing waste, nor are we alone on this journey. We work with our customers, suppliers and staff for whom sustainability is increasingly a priority, to produce workwear solutions that are kinder to the planet.

Our corporate social responsibility strategy makes a difference in four areas:

## 1. Ethical Offshore Sourcing

Deane Apparel requires minimum workplace conditions including the freedom to work, zero tolerance for modern slavery and child labour, fair wages and reasonable working conditions from our offshore factory suppliers. These suppliers are independently audited for us by Global Total Quality Assurance provider Intertek, using the International Workplace Conditions Assessment.

## 2. Sustainable Practices

Deane Apparel's own Christchurch factory not only cuts lead times giving customers the options of short production runs and a broad range of sizes, its garments come without the shipping miles of their international equivalents, trimming our carbon footprint.

Further cuts come from our Packaging Waste Reduction Program. Introduced in 2018, this has reduced the use

of pins, clips and plastic bags in our garment packaging by 95 percent. Over the next year, the remainder of our garments will be packed in compostable bags and plastic box liners.

We're going green in our workspaces too. We've reduced the need for artificial lighting in our Auckland warehouse by retrofitting it with high-transparency roofing materials. Our offices all have recycling facilities and have moved to low-energy LED lighting.

## 3. Product Sustainability

Our fabric portfolio is steadily expanding to include sustainable options. We offer several bio and plant-based fabrics with more on the way.

## 4. A Second Life for Deane Garments

Deane is an active contributor to The Formary ([textilereuse.com](https://textilereuse.com)); a New Zealand company pioneering textile re-use. We collaborate with other businesses through the Sustainable Business Network ([sustainable.org.nz](https://sustainable.org.nz)) and we also donate garments to charities such as The Salvation Army ([salvationarmy.org.nz](https://salvationarmy.org.nz)), Dress For Success ([dressforsuccessnz.co.nz](https://dressforsuccessnz.co.nz)), Holy Cross School ([hcsp.school.nz](https://hcsp.school.nz)) & Quality Education Services ([qes.org.nz](https://qes.org.nz)).

We treat sustainability the same way we approach the rest of our business; we're always looking for a better way. Our commitment is to work with our customers and our partners to be more sustainable right across the supply chain. We're on the journey and we'd love to have you along too.





# SHIRTS & TOPS

From cotton-rich shirts in sharp stripes and checks, to retail-inspired tops, there's a style to suit everyone. Colours and tones are complimentary so there are endless options to mix and match for work-day outfits which create a cohesive team look but also make everyone feel fabulous.





GLOUCESTER

Men's and women's long sleeve shirt. Yarn dyed check in cotton rich fabric. Comfort fit with back pleats for added movement. Button down collar. Men's with left chest pocket attached, women's with loose chest pocket included.

60% Cotton 40% Polyester 120gsm



Women's Shirt

- Sizes: 6-26  
CLA.BLS058-057 - Green, Navy & White  
CLA.BLS058-056 - Red, Navy & White  
CLA.BLS058-055 - Light Blue & White  
CLA.BLS058-018 - Black & White  
CLA.BLS058-716 - Royal & White





**Men's Shirt**  
Sizes: XS-5XL  
CLA.SHR032-057 - Green, Navy & White  
CLA.SHR032-056 - Red, Navy & White  
CLA.SHR032-716 - Royal & White  
CLA.SHR032-018 - Black & White  
CLA.SHR032-055 - Light Blue & White



# SOREN & SERENA

Fashion-forward cotton rich indigo denim long sleeve shirt that provides an easy fit with back action pleats in all sizes. Features ochre topstitching for an eye-catching contrast, button down collar and chest pocket.

65% Cotton 35% Polyester 145gsm

**Women's Shirt**  
Sizes: 6-26  
CLA.BLS060-848 - Indigo

**Men's Shirt**  
Sizes: XS-5XL  
CLA.SHR033-848 - Indigo





RICHMOND

Long sleeve shirt. Yarn dyed mini stripe in a cotton rich fabric. Comfort fit with back pleats for added movement. Button down collar. Contrast button stitching. Loose chest pocket included.

60% Cotton 40% Polyester 120gsm



Richmond Women's Shirt

Sizes: 6-26  
CLA.BLS062-104 - Red & White  
CLA.BLS062-107 - Charcoal & White  
CLA.BLS062-106 - Navy & White  
CLA.BLS062-124 - Mid Blue & White





**Richmond Men's Shirt**  
Sizes: XS-5XL  
CLA.SHR035-104 - Red & White  
CLA.SHR035-106 - Navy & White  
CLA.SHR035-124 - Mid Blue & White  
CLA.SHR035-107 - Charcoal & White



**CHICAGO**

Long sleeve shirt. Printed spot in a cotton rich poplin. Comfort fit with back pleats for added movement. Button down collar, contrast buttons and a loose chest pocket included.

60% Cotton 40% Polyester 115gsm

**Men's Shirt**  
Sizes: XS-5XL  
CLA.SHR034-009 - Navy & White

**Women's Shirt**  
Sizes: 6-26  
CLA.BLS061-009 - Navy & White





OXFORD

Men's long sleeve and women's 3/4 sleeve shirt. Yarn dyed Oxford weave in cotton rich fabric with easy care finish. Slim fit up to men's size L and women's size 14 then comfort fit with back darts for larger sizes. Men's with left chest pocket attached, women's with loose chest pocket included.

60% Cotton 40% Polyester 130gsm



Oxford Women's 3/4 Sleeve Shirt

Sizes: 6-26  
CLA.BLS031-960 - Silver Grey  
CLA.BLS031-122 - White  
CLA.BLS031-848 - Indigo  
CLA.BLS031-861 - Sky Blue

Oxford Women's Long Sleeve Shirt

Sizes: 6-26  
CLA.BLS032-122 - White







**Oxford Men's Shirt**  
Sizes: XS-5XL  
CLA.SHR024-960 - Silver Grey  
CLA.SHR024-122 - White  
CLA.SHR024-848 - Indigo  
CLA.SHR024-861 - Sky Blue



## CAMBRIDGE

Micro check shirt. Yarn dyed micro check in a cotton rich fabric with an easy care finish. Slim fit up to men's size L and women's size 14 then comfort fit with back darts for larger sizes. Contrast button stitching and men's with a left chest pocket, women's with loose chest pocket included.

60% Cotton 40% Polyester 115gsm





**Cambridge Women's 3/4 Sleeve Shirt**

Sizes: 6-26  
CLA.BLS027-048 - Purple & White  
CLA.BLS027-009 - Navy & White  
CLA.BLS027-018 - Black & White

**Cambridge Women's Short Sleeve Shirt**

Sizes: 6-26  
CLA.BLS055-009 - Navy & White



**Cambridge Men's Long Sleeve Shirt**

Sizes: XS-5XL  
CLA.SHR021-048 - Purple & White  
CLA.SHR021-009 - Navy & White  
CLA.SHR021-018 - Black & White





ALICE & ATLAS

Cotton rich poplin. Slim fit with a button down collar.  
Adjustable sleeve with button tab at upper arm.

60% Cotton 40% Polyester 105gsm

**Women's 3/4 Sleeve Shirt**  
Sizes: 6-26  
CLA.BLS024-998 - Black

**Men's Long Sleeve Shirt**  
Sizes: XS-5XL  
CLA.SHR017-998 - Black







FLORENCE

Women's 3/4 Sleeve Top. Polyester Georgette for a beautiful natural drape. Peasant style top with gathered neck line giving ample space through the waist and hips. A flattering curved hem allows the Florence to be worn in or out.

100% Polyester Georgette 110gsm



Women's 3/4 Sleeve Top

Sizes: 8-22

CLA.TOP041-832 - Cobalt / CLA.TOP041-823 - Dark Navy / CLA.TOP041-998 - Black





# MONACO

Women's Short Sleeve Top. Polyester Georgette for a beautiful natural drape. This t-shirt style top with it's fluted sleeve and flared hem make it a staple piece in any wardrobe. Easily styled tucked in or out, with or without a jacket. Ivory is double layered in the front.

100% Polyester Georgette 110gsm



**Women's Short Sleeve Top**  
Sizes: 8-22

- CLA.TOP037-530 - Emerald
- CLA.TOP037-832 - Cobalt
- CLA.TOP037-630 - Scarlet
- CLA.TOP037-823 - Dark Navy
- CLA.TOP037-998 - Black

**Women's Short Sleeve Top with Double Layered Front**  
Sizes: 8-22  
CLA.TOP046-131 - Ivory





ROMA

Women's Short Sleeve Top.  
Soft and silky knit polyester for  
comfort and durability. Flared  
sleeve for a natural drape over  
the arm. A curved hemline  
flatters the bust, waist and hip.

95% Polyester 5% Spandex Knit  
255gsm



**Women's Short Sleeve Top**  
Sizes: XS-2XL

- CLA.TOP045-620 - Red
- CLA.TOP045-820 - Navy
- CLA.TOP045-832 - Cobalt
- CLA.TOP045-921 - Charcoal
- CLA.TOP045-998 - Black





BARCELONA

Women's Long Sleeve Blouse. Polyester Georgette for a beautiful natural drape. Flattering cross over v-neck line. Long sleeves finished with a deep cuff. Pleat from the back yoke for extra movement and a longer curved back hem.

100% Polyester Georgette 110gsm

Women's Long Sleeve Blouse  
Sizes: 8-22

CLA.BLS057-720 - Purple  
CLA.BLS057-998 - Black



CHELSEA

Women's 3/4 Sleeve Top. Soft and silky knit polyester for comfort and durability with a Georgette back for a beautiful natural drape. This long line v-neck top with a curved hem and back pleat is full of comfort and so easy to wear.

Front: 95% Polyester 5% Spandex Knit 255gsm  
Back: 100% Polyester Georgette 110gsm



Women's 3/4 Sleeve Top  
Sizes: XS-2XL

CLA.TOP025-832  
Cobalt

CLA.TOP025-972  
Charcoal & Black

CLA.TOP025-998  
Black





SAMANTHA

Women's Short Sleeve Top. Soft and silky knit polyester for comfort and durability. Gathers flow from the v-neck to give a relaxed fit through the waist and hip.

95% Polyester 5% Spandex Knit 255gsm



Women's Short Sleeve Top

Sizes: XS-2XL

CLA.TOP009-832  
Cobalt

CLA.TOP009-620  
Red

CLA.TOP009-820  
Navy



AMALFI

Women's Short Sleeve Top. Soft and silky knit polyester for comfort and durability. Easy to wear T-shirt style top with pleated shoulder detail front and back of sleeve.

95% Polyester 5% Spandex Knit 255gsm

Women's Short Sleeve Top

Sizes: XS-2XL

CLA.TOP013-820 - Navy  
CLA.TOP013-620 - Red





# BRIGHTON

Women's cross-over top. Soft and silky knit polyester for comfort and durability. Flattering cross over v-neck style with side gathers.

95% Polyester 5% Spandex Knit  
255gsm



**Women's Short Sleeve Top**  
Sizes: XS-2XL

CLA.TOP010-832  
Cobalt

CLA.TOP010-820  
Navy

**Women's Long Sleeve Top**  
Sizes: XS-2XL

CLA.TOP001-998  
Black



# CHARLIE

Women's Short Sleeve Wrap Dress. Soft and silky knit polyester for comfort and durability. A round neck with a mock wrap belt and lined skirt. Falls in a natural drape to the knee.

95% Polyester 5% Spandex Knit 255gsm

Sizes: XS-2XL  
CLA.DRS002-820 - Navy  
CLA.DRS002-832 - Cobalt  
CLA.DRS002-998 - Black





# CASUAL STYLE

As the difference between work, home and play becomes less defined, so too do our clothes.

Casualisation of our wardrobes is the biggest trend in dressing for work. Heels replaced with trainers. Suits replaced by chinos and a jacket. Ties replaced by open collared shirts and t-shirts. Structure replaced by stretch. It all combines in a far more relaxed approach to daily dressing. At Deane, we're embracing the corporate casual by introducing new fabrics and styles which can be combined for a more contemporary, fresh daily look.







We're embracing  
the contemporary,  
fresh daily look.

Richmond Women's & Men's Shirt P16. Luna Chino Skirt P58. Logan Chino Pant P61.



Our casual design spread  
features garments styled by our  
designer to achieve an on-trend  
look for more casual days.

Monaco Short Sleeve Top P30. Aria Jogger P53.





Isla Women's Chino Jacket P57. Luna Chino Skirt P58. Leo Men's Chino Jacket P60. Logan Chino Pant P61.



Serena Women's Denim Shirt P15.  
Luna Chino Skirt P58.

Gloucester Men's Shirt P14.  
Logan Chino Pant P61.

Monaco Top P30.  
Isabella Pleated Skirt P50.



# ESSENCE SUITING

64% Polyester 34% Viscose 2% Spandex

Our ever-popular Essence range now offers even more styles to build gorgeous work-day outfits. The new Aria jogger trouser with its slightly cropped, slim leg and draw string waist is contemporary, super comfortable and looks fabulous paired with heels or flats. Not to be outshone, the Isabella skirt with its relaxed elasticated waist and full pleated midi length dresses up any top or shirt.

As always, our winning combination of natural viscose and hard-wearing polyester with 2% stretch make these garments beautiful and soft to wear but still hard wearing and easy to care for so they last the distance.





ARABELLA

Women's longline two-button jacket, semi-fitted for a smoother fall. A classic in every working woman's wardrobe. Fully lined with collar and revere, back vent and front pockets with flaps.

Sizes: 6-20  
ESS.CJK005-998 - Black  
ESS.CJK005-820 - Navy



TOULOUSE

Women's collarless jacket. Stylish mid-length fitted jacket with one button opening. Collarless with front feature band for a modern European look. Fully lined with slight stretch.

Sizes: 6-20  
ESS.CJK006-998 - Black



GRETA

Classic poly viscose short sleeve shift dress flattering to all shapes. Princess panels and back pleats provide a lovely line through the body. Fully lined with front angle jet pockets.

Sizes: 6-20  
ESS.DRS002-820 - Navy / ESS.DRS002-998 - Black







# ISABELLA

Ultra-feminine permanent pleated skirt. A wide elastic waist band and lots of movement make this a dream to wear.

Sizes: XS-3XL  
ESS.SKT009-998 - Black



# ANNALISA

Feminine A-line skirt that accentuates the waist. Fully lined with cutaway pockets and belt loops. Sizes 16+ also have waist side elastic.

Sizes: 6-22 / ESS.SKT007-998 - Black



# EMMA

Versatile straight skirt with front and back hem box pleats for ease of movement. Fully lined with cutaway pockets and belt loops. Sizes 16+ also have waist side elastic.

Sizes: 6-22 / ESS.SKT008-820 - Navy

# JULIA

Mid-length skirt with back hem inverted pleat for movement and comfort. Fully lined with front pockets and belt loops. Sizes 16+ also have waist side elastic.

Sizes: 6-22  
ESS.SKT003-998 - Black  
ESS.SKT003-820 - Navy



# JULIETTE

Knee-length skirt with back hem inverted pleat for movement and comfort. Fully lined with front pockets and belt loops. Sizes 16+ also have waist side elastic.

Sizes: 6-22  
ESS.SKT006-998 - Black





GRACE

Classic fit pant with twin pleats for extra room and comfort. Features a wide waist band, side pockets and belt loops. Sizes 16+ also have waist side elastic.

Sizes: 6-24 / ESS.CTR006-998 - Black



LAUREN

Elegant and figure flattering slim fit pant. Features curved waistband, angle pockets and beltloops.

Sizes: 6-22 / ESS.CTR009-998 - Black



AVA

Women's flat front trouser. Classic fit, flat front pant with a slimmer hem width that gives a lovely fall through the leg. Features a wide waist band, side pockets and belt loops. Sizes 16+ have waist side elastic.

Sizes: 6-22  
ESS.CTR005-998 - Black  
ESS.CTR005-820 - Navy



ARIA JOGGER

Women's jogger trouser. Stylish and super comfortable with a slim leg and elastic waist. Features draw string and angle pockets at the front, fake welt pockets at the back and wide hem with slits. An extremely versatile addition to any business casual wardrobe.

Sizes: 6-22 / ESS.PNT001-820 - Navy / ESS.PNT001-998 - Black





PAOLO

Men's Suit Jacket. A classic fit jacket that's an easy choice for the office but can also be worn with chinos for a smart casual weekend look. Fully lined with two button opening, flap pockets and left chest welt pocket.

Sizes: 92R-112R  
ESS.CJK001-820 - Navy  
ESS.CJK001-998 - Black



MARCO

Men's twin pleat trouser. Front waist pleats offer more room across the thigh on a modern slim leg trouser. Features side pockets, back jet pocket and rubberised inside waistband.

Sizes: 77R-117R  
ESS.CTR001-998 - Black

CARLO

Men's flat front trouser. European style flat front with a slimmer hem width. Features side pockets, back jet pocket and rubberised waist band.

Sizes: 77R-117R  
ESS.CTR003-998 - Black  
ESS.CTR003-820 - Navy







# CHINO SUITING

58% Cotton 40% Polyester 2% Spandex 235gsm

Our capsule chino range offers the ultimate in workday flexibility. Dressed up or down these pieces can be paired with denim, a t-shirt or a crisp cotton-rich shirt depending on the day. Trainers, boots or flats depending on the outfit. This hard-wearing yarn combination of cotton and polyester means our chino range will retain it's shape and colour and the touch of stretch means they'll be super comfortable to wear all day. A must-have for any contemporary work wardrobe.

## ISLA

Durable cotton rich stretch twill gives this jacket both comfort and shape. Patch pockets finish the casual look.

Sizes: 8-22  
DEA.CJK001-242 - Walnut  
DEA.CJK001-820 - Navy  
DEA.CJK001-998 - Black







LUNA

Versatile slim fit chino skirt with slight stretch for comfort. Features side front pockets, back jet pocket and back hem vent for movement. Can easily be paired with flats or heels.

Sizes: 6-22  
DEA.SKT003-820 - Navy  
DEA.SKT003-998 - Black  
DEA.SKT003-242 - Walnut



LIA

Slim fit chino pant with slight stretch for comfort. Side front pockets, back jet pockets and belt loops. A great staple for the business casual wardrobe.

Sizes: 6-22  
DEA.PNT027-242 - Walnut  
DEA.PNT027-820 - Navy  
DEA.PNT027-998 - Black







LEO

Men's chino corporate jacket. Durable cotton rich stretch twill gives this jacket both comfort and shape. Patch pockets finish the casual look.

Sizes: 92R-112R  
DEA.CJK002-242 - Walnut  
DEA.CJK002-820 - Navy  
DEA.CJK002-998 - Black



LOGAN

Men's slim fit chino pant with slight stretch for comfort. Side front pockets, back jet pockets and belt loops. A great staple for the business casual wardrobe.

Sizes: 77R - 117R  
DEA.PNT026-242 - Walnut  
DEA.PNT026-820 - Navy  
DEA.PNT026-998 - Black







Clean Lines  
& Effortless  
Sophistication

# WOOLBLEND SUITING

58% Trevira, 40% Wool and 2% Spandex

Premium wool, blended with Trevira, a sustainably sourced, high tensile polyester which adds a soft, gentle handle to this fabric for a gorgeous feel against the skin.

This range offers clean lines and effortless sophistication to any corporate wardrobe.





LOUISE

Women's short jacket. One-button tuxedo jacket that is comfortably chic with a feminine shape. Fully lined with shawl collar and flap pockets.

Sizes: 8-20  
WLB.CJK004-921 - Charcoal / WLB.CJK004-998 - Black







JULIA

Mid-length 68cm straight skirt with back hem inverted pleat for movement and comfort. Fully lined with front pockets and belt loops. Sizes 16+ also have waist side elastic.

Sizes: 6-22  
WLB.SKT001-921 - Charcoal  
WLB.SKT001-998 - Black



GLORIA

Women's flat front trouser. A timeless classic fit pant with flat front for a professional look. Features side pockets, wide belt loops and back yoke. Sizes 16+ also have side elastic waist.

Sizes: 6-20  
WLB.CTR009-921 - Charcoal  
WLB.CTR009-998 - Black

JULIETTE

Knee-length 58cm straight skirt with back hem inverted pleat for movement and comfort. Fully lined with front pockets and belt loops. Sizes 16+ also have waist side elastic.

Sizes: 6-22  
WLB.SKT003-921 - Charcoal  
WLB.SKT003-998 - Black



LAUREN

Women's slim leg trouser. Figure-flattering slim fit pant that elongates the leg. Features a flat front, curved waistband, angle pockets and belt loops.

Sizes: 6-24  
WLB.CTR010-921 - Charcoal  
WLB.CTR010-998 - Black







# STEFANO

Men's suit jacket. Classic mid-length tailored jacket with style and detail. Fully lined with two front buttons, flap pockets, jet pocket on the right side above the flap, left chest welt pocket, inside pocket, sleeve buttons, collar and reverse with left buttonhole.

Sizes: 92R-108R  
WLB.CJK006-921 - Charcoal / WLB.CJK006-998 - Black



# RENZO

Men's Darted Front Trouser. Timeless classic fit trousers, fully lined providing comfort and detail. Inside rubberized waistband with fob pocket on the right hand side, front side pockets, back jet pockets with button and front dart.

Sizes: 77R-107R  
WLB.CTR008-998 - Black  
WLB.CTR008-921 - Charcoal





# SOFT SUITING

100% Polyester

Exceptionally hard wearing, easy to care for and cost effective. This range is designed to withstand the rigors of a busy work environment, day in, day out. Light weight and breathable, quick drying for last minute wash and wear as well as excellent colour retention to stay fresh looking for longer. Great value without breaking the uniform budget.

## TWIN PLEAT TROUSER

Twin pleat trouser designed for maximum movement and comfort. Features a slimmer hem width, side pockets and belt loops. Sizes 16+ also have side waist elastic.

Sizes: 6-24  
SSU.CTR006-998 - Black  
SSU.CTR006-820 - Navy



## FLAT FRONT TROUSER

Classic flat front trouser that pairs well with flats or heels. Features a slimmer hem width, side pockets and belt loops. Sizes 16+ also have side waist elastic.

Sizes: 6-24  
SSU.CTR005-998 - Black  
SSU.CTR005-820 - Navy





CROPPED  
TROUSER

Flat front crop pant offer a modern look that can be dressed up or down. Features side pockets and belt loops. Sizes 16+ also have waist side elastic.

Sizes: 6-24  
SSU.TSR003-820 - Navy



TWIN PLEAT  
SHORT

Pleat front shorts offer a comfortable modern twist on suiting. Practical side pockets and belt loops. Sizes 16+ also have waist side elastic.

Sizes: 6-24  
SSU.SHO001-820 - Navy

PLEAT  
TROUSER

Front waist pleats give these trousers a throw-back sophistication with plenty of comfort. Front side pockets, back jet pocket and rubberised waist band.

Sizes: 72R-132R  
SSU.CTR004-998 - Black  
SSU.CTR004-820 - Navy



FLAT FRONT  
TROUSER

Flat front trouser for a stylish fit. Features front side pockets, back jet pockets and rubberised waist band.

Sizes: 72R-122R  
SSU.CTR003-998 - Black



# WARMTH

For that final layer on crisp days and chilly nights. A selection of jackets, vests, jerseys and cardigans to keep your staff cosy and protected.





DRAPE  
CARDIGAN

Women's merino blend cardigan with lovely handkerchief style drape. A single jersey knit that is warm, comfortable and durable.

50% Merino 50% Acrylic  
Single Jersey Knit 12 gauge

Sizes: XS-5XL  
KNT.CDG007-998 - Black



SCOOP  
NECK VEST

Contemporary fit scoop neck vest in a mid-weight merino blend. Rib armhole band and deep rib body hem.

50% Merino 50% Acrylic  
Single Jersey Knit 12 gauge

Sizes: XS-5XL  
MER.VST004-998 - Black  
MER.VST004-820 - Navy



BUTTON UP  
CARDIGAN

Contemporary fit v-neck button up cardigan designed for warmth and style. Features two lower front welt pockets with internal pocket bags, ribbed sleeves and body hems.

50% Merino 50% Acrylic  
Single Jersey Knit 12 gauge

Sizes: XS-5XL  
KNT.CDG006-824 - French Navy  
KNT.CDG006-998 - Black







UNISEX  
V-NECK  
VEST

Classic fit v-neck vest in a heavy weight for warmth and durability. Rib armhole band and deep rib body hem.

80% Wool 20% Nylon  
14 gauge

Sizes: 2XS-5XL  
KNT.VST003-820 - Navy  
KNT.VST003-998 - Black

UNISEX  
V-NECK  
JERSEY

Classic fit v-neck jersey in a heavy weight for warmth and durability. Ribbed sleeve and body hems.

80% Wool 20% Nylon 14 gauge

Sizes: 2XS-5XL  
KNT.JSY004-998 - Black  
KNT.JSY004-820 - Navy



MID LAYER  
JACKET

Men's and women's mid layer jacket. Contemporary fit thermal fleece jacket that is warm, comfortable and ideal as an insular layer. Smart casual corporate garment with narrow twinstitch detail and flex underarm detail for ease of movement. Two lower front zip hand pockets and a reversed zip front for a clean look.

100% Polyester 280gsm

**Women's Jacket**  
Sizes: XS-4XL  
OTW.JKT025-998 - Black

**Men's Jacket**  
Sizes: XS-4XL  
OTW.JKT024-998 - Black





## SOFT SHELL JACKET

Men's and women's soft shell jacket. Classic fit, thermal, breathable soft shell jacket featuring adjustable cuffs and body hem. Includes two front zip hand pockets, two internal mesh lined pockets and a right hand size zip chest pocket. Reversed zip front with internal storm flap gives a clean look.

97% Polyester 3% Elastane Bonded Inner Membrane 330gsm

**Men's Jacket**

Sizes: XS-6XL  
OTW.JKT002-820 - Navy  
OTW.JKT002-998 - Black

**Women's Jacket**

Sizes: XS-4XL  
OTW.JKT003-820 - Navy  
OTW.JKT003-998 - Black



## SOFT SHELL VEST

Men's and women's soft shell vest. Classic fit, thermal vest featuring stand collar and adjustable body hem. Includes two front zip hand pockets, two internal mesh lined pockets and a right hand size zip chest pocket. Reversed zip front with internal storm flap gives a clean look.

97% Polyester 3% Elastane Bonded Inner Membrane 330gsm

**Men's Vest**

Sizes: XS-6XL  
OTW.VST002-820 - Navy  
OTW.VST002-998 - Black

**Women's Vest**

Sizes: XS-4XL  
OTW.VST003-820 - Navy  
OTW.VST003-998 - Black





# HOSPITALITY

With a range of options available both custom or off the shelf, talk to our team about how we can bring your café or eatery to life.



*"My design inspiration for our hospitality shoot was to style some contemporary hospitality looks using our aprons, new chinos and some great quality cotton t-shirts. The look is fresh and contemporary."*

*Head Designer - Laura Heraud*





ADAPTABLE  
BIB APRON

Heavy duty apron that converts from a bib-style to half apron. Features a large front pocket with two divisions, left chest pocket with two divisions and angled top edge.

**Indigo Apron**  
73% Cotton 27% Polyester 270gsm  
DEA.APR015-848

**Latte Apron**  
65% Polyester 35% Cotton Canvas 250gsm  
DEA.APR014-261



REVERSIBLE  
DENIM APRON

Reversible denim apron in a stain resistant finish. Features a large front pocket with two divisions.

70% Cotton 30% Polyester 330gsm

**Half Apron** DEA.APR010-998 - Black & Silver  
**Full Apron** DEA.APR011-998 - Black & Silver

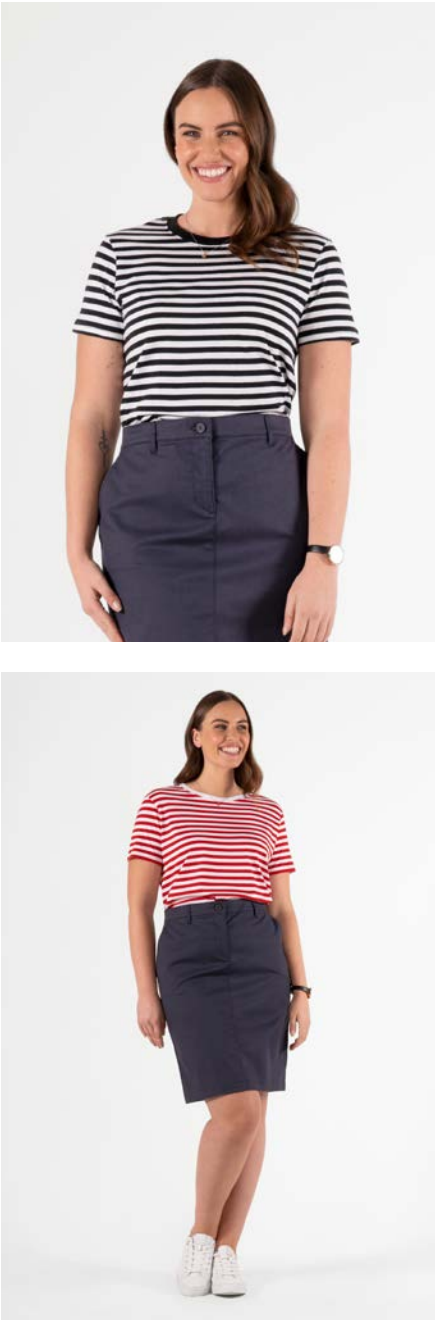







### WOMEN'S T-SHIRT

Women's cotton t-shirt. The quintessential 100% cotton t-shirt that never goes out of style.



**Women's Maple Stripe T-Shirt**  
100% Cotton 160gsm  
Sizes: XS-XL  
BIN.TEE033-103 - Green & White  
BIN.TEE033-018 - Black & White  
BIN.TEE033-043 - Red & White  
BIN.TEE033-802 - Navy & White

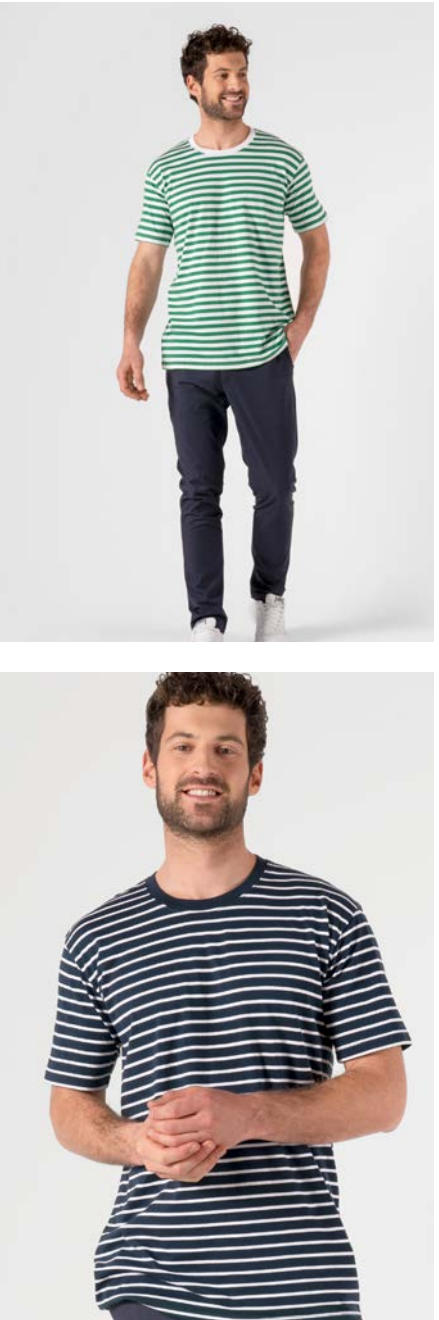
**Women's Mali T-Shirt**  
100% Cotton 150gsm  
XS to 2XL  
BIN.TEE008-122 - White






### MEN'S T-SHIRT

Men's cotton t-shirt. The quintessential 100% cotton t-shirt that never goes out of style.



**Men's Staple Stripe T-Shirt**  
100% Cotton 160gsm  
Sizes: S-2XL  
BIN.TEE032-018 - Black & White  
BIN.TEE032-103 - Green & White  
BIN.TEE032-802 - Navy & White  
BIN.TEE032-043 - Red & White

**Men's Shadow T-Shirt**  
100% Cotton 150gsm  
Sizes: S-2XL  
BIN.TEE007-122 - White







# HEALTHCARE

Introducing a range of garments for the Health and Aged Care sector. Prints and colours can be effortlessly combined to create a cohesive and welcoming uniform look across care and non-care areas of any hospital, care facility or surgery.

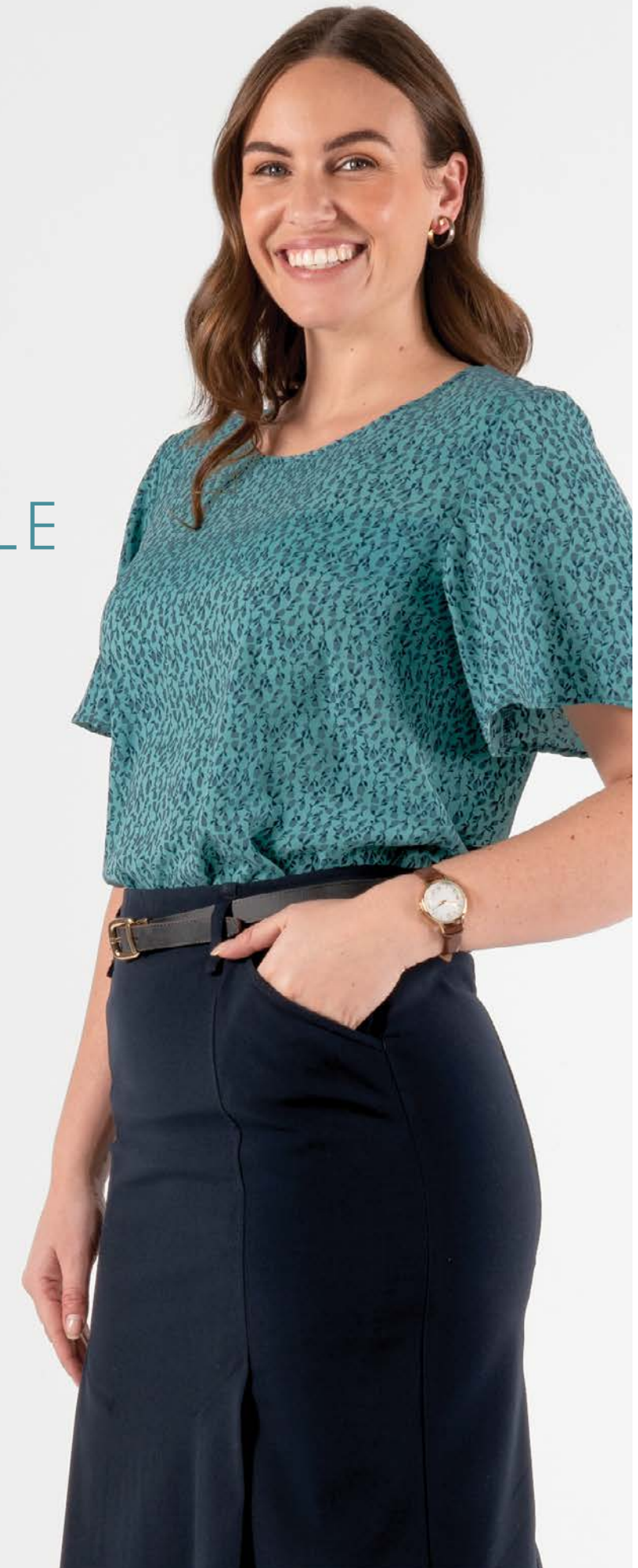
Styles and fabrics are designed to flatter and enhance a range of body shapes with a focus on comfort, breathability and function. Blend these styles with our range of suiting, outerwear and workwear for a total uniform solution that covers nursing staff to kitchen hands and everyone in between.



## STRETCH FAILLE SUSTAINABLE FABRIC

Deane Healthcare styles Iris, Poppy and Jasmine are made with 41% ECO CIRCLE recycled polyester fibre.

This fibre is from post-consumer and plastic bottles using the Eco Circle process which reduces energy and carbon emission by approx. 50% compared to traditional processes. The Eco Circle process has Oeko-Tex certifications and is recognised by the Global Recycled Standards.





IRIS

Women's 3/4 sleeve blouse. Made from a breathable recycled polyester with natural stretch, this flattering style can be worn as a 3/4 sleeve or buttoned up to a short sleeve. A soft v-neck finished with shell buttons and gentle gathers ensures this style floats over the waist and hip.

55% Polyester 45% Recycled Polyester  
120gsm



Iris Women's Blouse

Sizes: 6-26  
HEA.BLS009-092 - Flora Print in Hydro Teal  
HEA.BLS009-091 - Sea Breeze Print in Estate Blue  
HEA.BLS009-834 - Estate Blue  
HEA.BLS009-584 - Hydro Teal



POPPY

Women's short sleeve tunic. In a breathable recycled polyester with natural stretch, this tunic style top is designed to flatter the silhouette and provide plenty of function with elbow length sleeves and hip pockets.

55% Polyester 45% Recycled Polyester  
120gsm



Poppy Printed Blouse with Contrast Vertical Seams

Sizes: 6-26  
HEA.BLS008-091 - Sea Breeze Print in Estate Blue  
HEA.BLS008-092 - Flora Print in Hydro Teal

Poppy Blouse

Sizes: 6-26  
HEA.BLS010-834 - Estate Blue  
HEA.BLS010-584 - Hydro Teal



JASMINE

Women's short sleeve top. In a breathable recycled polyester, this t-shirt style top with a beautiful fluted sleeve is easy to wear tucked in or out.

55% Polyester 45% Recycled Polyester 120gsm

  
Stretch Faille  
Sustainable Fabric



**Jasmine Tunic**  
Sizes: 6-26  
HEA.TUN022-091 - Sea Breeze Print in Estate Blue  
HEA.TUN022-584 - Hydro Teal  
HEA.TUN022-834 - Estate Blue  
HEA.TUN022-092 - Flora Print in Hydro Teal





PRIMROSE

Women's short sleeve top. Soft and silky knit polyester for comfort and durability. Flared sleeve for a natural drape over the arm. A pleated neckline and flared hem line flatter the bust, waist and hip.

95% Polyester 5% Spandex Knit 255gsm

Sizes: XS-2XL  
HEA.TOP007-584 - Hydro Teal  
HEA.TOP007-834 - Estate Blue







OASIS

Comfortable and cool button through shirts and blouses in a soft-touch breathable fabric with very good UPF rating for sun protection. Women's blouses feature flattering open necklines, slimline plackets and curved hems. Men's shirts feature a curved hem, chest and pocket pen.

100% Comfort Cool Polyester

Women's Short Sleeve Shirt

- Sizes: 6-26
- BIN.BLS025-583 - Teal
- BIN.BLS025-640 - Cherry
- BIN.BLS025-820 - Navy
- BIN.BLS025-851 - Electric Blue

Women's 3/4 Sleeve Shirt

- Sizes: 6-26
- BIN.BLS022-583 - Teal
- BIN.BLS022-640 - Cherry
- BIN.BLS022-820 - Navy
- BIN.BLS022-851 - Electric Blue

Women's Short Sleeve Overblouse

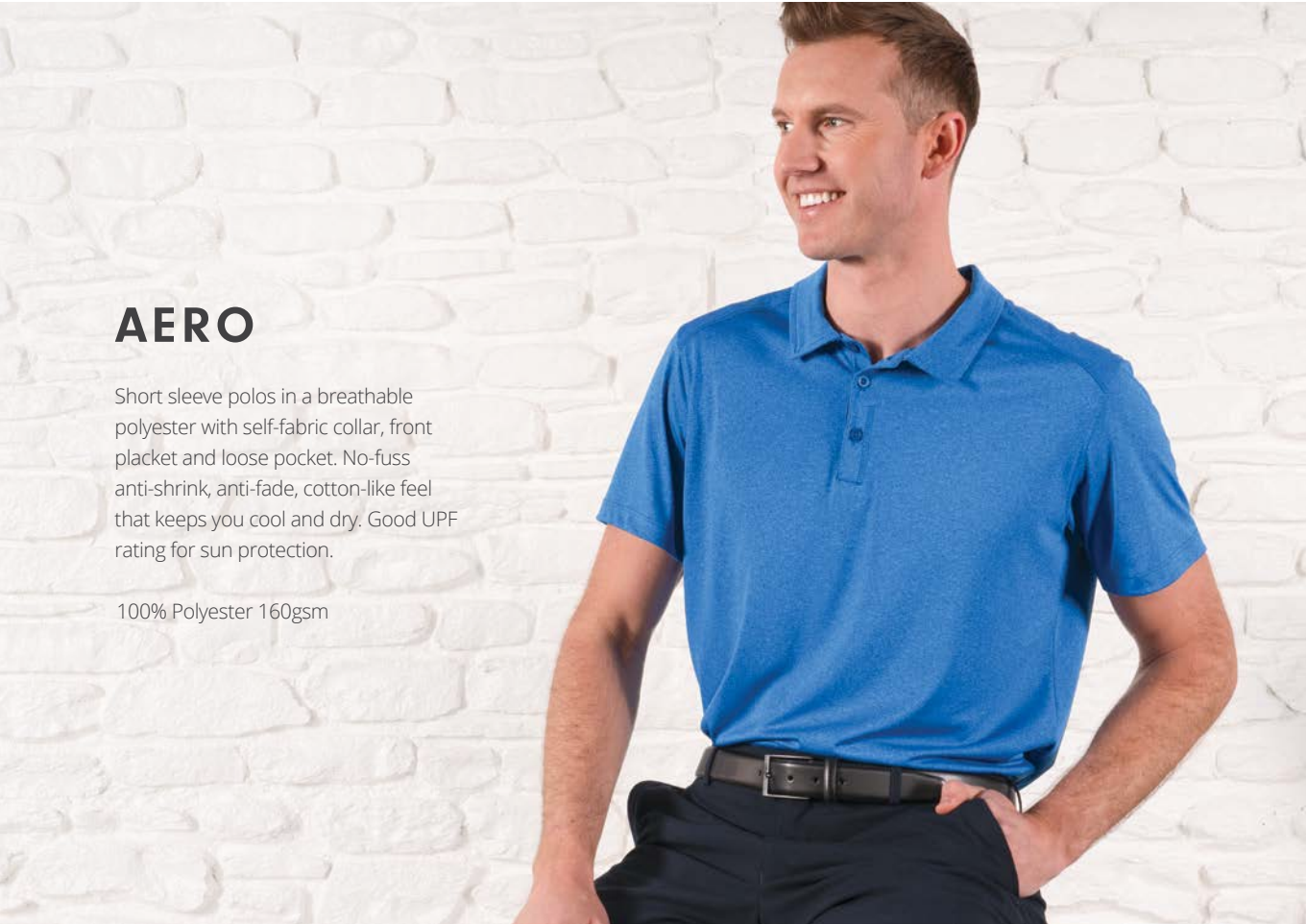
- Sizes: 6-30
- BIN.TOP001-583 - Teal
- BIN.TOP001-640 - Cherry
- BIN.TOP001-851 - Electric Blue

Men's Short Sleeve Shirt

- Sizes: S-3XL, 5XL
- DEA.SHR018-583 - Teal
- DEA.SHR018-640 - Cherry
- DEA.SHR018-820 - Navy
- DEA.SHR018-851 - Electric Blue



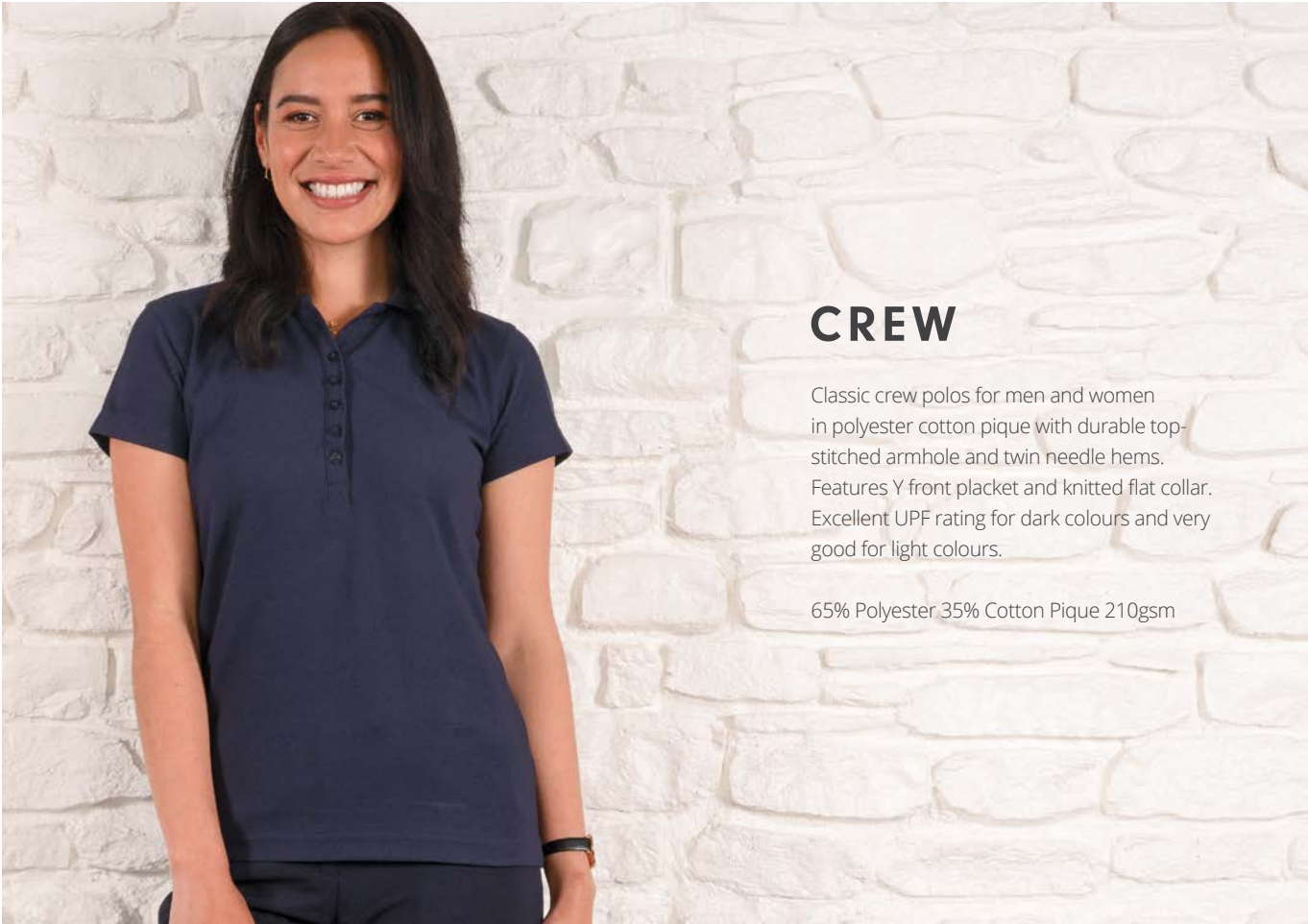




AERO

Short sleeve polos in a breathable polyester with self-fabric collar, front placket and loose pocket. No-fuss anti-shrink, anti-fade, cotton-like feel that keeps you cool and dry. Good UPF rating for sun protection.

100% Polyester 160gsm



CREW

Classic crew polos for men and women in polyester cotton pique with durable top-stitched armhole and twin needle hems. Features Y front placket and knitted flat collar. Excellent UPF rating for dark colours and very good for light colours.

65% Polyester 35% Cotton Pique 210gsm

Men’s Aero Polo Shirt

Sizes: XS-5XL

- BIN.POL110-583 - Teal
- BIN.POL110-620 - Red
- BIN.POL110-820 - Navy
- BIN.POL110-851 - Electric Blue

Women’s Aero Polo Shirt

Sizes: 6-24

- BIN.POL111-583 - Teal
- BIN.POL111-620 - Red
- BIN.POL111-820 - Navy
- BIN.POL111-851 - Electric Blue



Men’s Crew Polo

Sizes: XS-5XL

- DEA.POL078-583 - Teal
- DEA.POL078-620 - Red
- DEA.POL078-820 - Navy
- DEA.POL078-830 - Royal

Women’s Crew Polo

Sizes: 8-24

- DEA.POL077-583 - Teal
- DEA.POL077-620 - Red
- DEA.POL077-820 - Navy
- DEA.POL077-830 - Royal







DAHLIA

Short sleeve tunic in a viscose blend with antimicrobial finish that feels soft on the skin. Crossover neck with princess seams and back seams with action pleat for easy movement. Features multiple patch pockets, right chest loop, internal right pocket with loop and left side seam zip allowing access to a pant pocket.

65% Polyester 35% Viscose Twill  
Anti-Microbial Finish 195gsm

Sizes: 6-26  
HEA.TUN028-830 - Royal  
HEA.TUN028-583 - Teal



ELM

Short sleeve men's scrub top with multiple patch pockets. Viscose blend with antimicrobial finish feels soft on the skin. Includes internal pocket with loop and chest loop.

65% Polyester 35% Viscose Twill  
Anti-Microbial Finish 195gsm

Sizes: 2XS-4XL  
HEA.TOP011-830 - Royal  
HEA.TOP011-583 - Teal







SCRUB  
TOP

Easy fit women's short sleeve scrub top with v-neck. Features multiple pockets, internal utility loops and bungee cord.

96% Polyester 4% Elastane

Sizes: S-5XL  
BIN.TOP031-851 - Electric Blue  
BIN.TOP031-583 - Teal  
BIN.TOP031-820 - Navy



SCRUB  
TOP

Easy fit short sleeve scrub top with v-neck. Features multiple pockets, internal utility loops and bungee cord.

96% Polyester 4% Elastane

Sizes: XS-5XL  
BIN.TOP032-851 - Electric Blue  
BIN.TOP032-820 - Navy  
BIN.TOP032-583 - Teal







WOMEN'S  
SCRUB PANT

Women's relaxed fit, straight leg scrub pant with roll up leg option. Features a large pocket that can fit an iPad mini, cargo pockets with utility loops on right hand side, elastic waist and draw string closure.

96% Polyester 4% Elastane

Sizes: S-5XL  
BIN.PNT042-851 - Electric Blue  
BIN.PNT042-583 - Teal  
BIN.PNT042-820 - Navy



MEN'S  
SCRUB PANT

Men's relaxed fit, straight leg scrub pant with roll up leg option. Features a large pocket that can fit an iPad mini, cargo pockets with utility loops on right hand side, elastic waist and draw string closure.

96% Polyester 4% Elastane

Sizes: XS-5XL  
BIN.PNT043-583 - Teal  
BIN.PNT043-851 - Electric Blue  
BIN.PNT043-820 - Navy






FLAT FRONT TROUSER

Comfortable pant in light weight stretch fabric with side pockets. Waist side elastic on sizes 6 to 18 and full back elastic on sizes 20+.

55% Cotton 45% Polyester  
Mechanical Stretch 160gsm

Sizes: 6-28  
HEA.TSR007-998 - Black  
HEA.TSR007-820 - Navy



**Maternity**  
Maternity garments available on request. Contact us for info.



A-LINE SKIRT

Light weight stretch fabric and an inverted pleat at the hem make this A-line skirt great for comfort and movement. Features waist side elastic on all sizes, back zip opening and side pockets.

55% Cotton 45% Polyester  
Mechanical Stretch 160gsm

Sizes: 6-28  
HEA.SKT001-998 - Black  
HEA.SKT001-820 - Navy



3/4 TROUSER

Comfortable 3/4 pant with side pockets and side leg hem splits. Waist side elastic on sizes 6-18 and full back elastic on sizes 20+.

55% Cotton 45% Polyester  
Mechanical Stretch 160gsm

Sizes: 6-28  
HEA.TSR005-998 - Black  
HEA.TSR005-820 - Navy



SHORTS

Comfortable shorts in light weight stretch fabric with side pockets. Waist side elastic on sizes 6 to 18 and full back elastic on sizes 20+.

55% Cotton 45% Polyester  
Mechanical Stretch 160gsm

Sizes: 6-30  
HEA.SHO001-998 - Black  
HEA.SHO001-820 - Navy





**FLAT FRONT  
TROUSER**

Comfortable men's pant in light weight stretch fabric with side front pockets. Front waist pleats, back jet pockets and belt loops.

55% Cotton 45% Polyester  
Mechanical Stretch 160gsm

Sizes: 77R-132R  
HEA.TSR008-998 - Black

Sizes: 72R-142R  
HEA.TSR008-820 - Navy



**Designed to flatter  
all body shapes.**





Career Shirts - Women



**GLOUCESTER LONG SLEEVE**  
60% Cotton 40% Polyester 120gsm  
Sizes: 6-26

- CLA.BLS058-018 - Black & White
- CLA.BLS058-055 - Light Blue & White
- CLA.BLS058-056 - Red, Navy & White
- CLA.BLS058-057 - Green, Navy & White
- CLA.BLS058-716 - Royal & White



**RICHMOND LONG SLEEVE**  
60% Cotton 40% Polyester 120gsm  
Sizes: 6-26

- CLA.BLS062-104 - White/Red
- CLA.BLS062-106 - White/Navy
- CLA.BLS062-107 - White/Charcoal
- CLA.BLS062-124 - White/Mid Blue



**OXFORD 3/4 SLEEVE**  
60% Cotton 40% Polyester 130gsm  
Sizes: 6-26

- CLA.BLS031-122 - White
- CLA.BLS031-848 - Indigo
- CLA.BLS031-861 - Sky Blue
- CLA.BLS031-960 - Silver Grey



**CAMBRIDGE 3/4 SLEEVE**  
60% Cotton 40% Polyester 115gsm  
Sizes: 6-26

- CLA.BLS027-009 - Navy & White
- CLA.BLS027-018 - Black & White
- CLA.BLS027-048 - Purple & White



**ALICE 3/4 SLEEVE**  
60% Cotton 40% Polyester 105gsm  
Sizes: 6-26

- CLA.BLS024-998 - Black



**CHICAGO BLOUSE**  
60% Cotton 40% Polyester 115gsm  
Sizes: 6-26

- CLA.BLS061-009 - Navy/White



**SERENA LONG SLEEVE**  
65% Cotton 35% Polyester 145gsm  
Sizes: 6-26

- CLA.BLS060-848 - Indigo



**OXFORD LONG SLEEVE**  
60% Cotton 40% Polyester 115gsm  
Sizes: 6-26

- CLA.BLS032-122 - White



**CAMBRIDGE SHORT SLEEVE**  
60% Cotton 40% Polyester 115gsm  
Sizes: 6-26

- CLA.BLS055-009 - Navy & White

Career Shirts - Men



**GLOUCESTER LONG SLEEVE**  
60% Cotton 40% Polyester 120gsm  
Sizes: XS-5XL

- CLA.SHR032-018 - Black & White
- CLA.SHR032-055 - Light Blue & White
- CLA.SHR032-056 - Red, Navy & White
- CLA.SHR032-057 - Green, Navy & White
- CLA.SHR032-716 - Royal & White



**RICHMOND LONG SLEEVE**  
60% Cotton 40% Polyester 120gsm  
Sizes: XS-5XL

- CLA.SHR035-104 - Red & White
- CLA.SHR035-106 - Navy & White
- CLA.SHR035-107 - Charcoal & White
- CLA.SHR035-124 - Mid Blue & White



**OXFORD LONG SLEEVE**  
60% Cotton 40% Polyester 130gsm  
Sizes: XS-5XL

- CLA.SHR024-122 - White
- CLA.SHR024-848 - Indigo
- CLA.SHR024-861 - Sky Blue
- CLA.SHR024-960 - Silver Grey



**ATLAS LONG SLEEVE**  
60% Cotton 40% Polyester 105gsm  
Sizes: XS-5XL

- CLA.SHR017-998 - Black



**CHICAGO LONG SLEEVE**  
60% Cotton 40% Polyester 115gsm  
Sizes: XS-5XL

- CLA.SHR034-009 - Navy & White



**SOREN LONG SLEEVE**  
65% Cotton 35% Polyester 145gsm  
Sizes: XS-5XL

- CLA.SHR033-848 - Indigo



**CAMBRIDGE LONG SLEEVE**  
60% Cotton 40% Polyester 115gsm  
Sizes: XS-5XL

- CLA.SHR021-009 - Navy & White
- CLA.SHR021-018 - Black & White
- CLA.SHR021-048 - Purple & White



Women’s Style Tops & Dress



**FLORENCE 3/4 SLEEVE**  
100% Polyester Georgette 110gsm  
Sizes: 8-22

CLA.TOP041-823 - Dark Navy  
CLA.TOP041-832 - Cobalt  
CLA.TOP041-998 - Black



**ROMA SHORT SLEEVE**  
95% Polyester 5% Spandex Knit 255gsm  
Sizes: XS-2XL

CLA.TOP045-820 - Navy  
CLA.TOP045-832 - Cobalt  
CLA.TOP045-620 - Red  
CLA.TOP045-921 - Charcoal  
CLA.TOP045-998 - Black



**CHELSEA 3/4 SLEEVE**  
95% Polyester 5% Spandex Knit (front)  
100% Polyester Georgette (back)  
255gsm  
Sizes: XS-2XL

CLA.TOP025-832 - Cobalt  
CLA.TOP025-972 - Charcoal/Black  
CLA.TOP025-998 - Black



**AMALFI SHORT SLEEVE**  
95% Polyester 5% Spandex Knit 255gsm  
Sizes: XS-2XL

CLA.TOP013-620 - Red  
CLA.TOP013-820 - Navy



**BRIGHTON LONG SLEEVE**  
95% Polyester 5% Spandex Knit 255gsm  
Sizes: XS-2XL

CLA.TOP001-998 - Black



**MONACO SHORT SLEEVE**  
100% Polyester Georgette 110gsm  
Sizes: 8-22

CLA.TOP046-131 - Ivory  
CLA.TOP037-530 - Emerald  
CLA.TOP037-620 - Red  
CLA.TOP037-823 - Dark Navy  
CLA.TOP037-832 - Cobalt  
CLA.TOP037-998 - Black



**SAMANTHA SHORT SLEEVE**  
95% Polyester 5% Spandex Knit 255gsm  
Sizes: XS-2XL

CLA.TOP009-620 - Red  
CLA.TOP009-832 - Cobalt  
CLA.TOP009-820 - Navy



**BARCELONA LONG SLEEVE**  
100% Polyester Georgette 110gsm  
Sizes: 8-22

CLA.BLS057-720 - Purple  
CLA.BLS057-998 - Black



**BRIGHTON SHORT SLEEVE**  
95% Polyester 5% Spandex Knit 255gsm  
Sizes: XS-2XL

CLA.TOP010-832 - Cobalt  
CLA.TOP010-820 - Navy



**CHARLIE WRAP DRESS**  
95% Polyester 5% Spandex Knit 255gsm  
Sizes: XS-2XL

CLA.DRS002-820 - Navy  
CLA.DRS002-832 - Cobalt  
CLA.DRS002-998 - Black

Essence Suiting - Women



**ARABELLA LONGLINE JACKET**  
64% Polyester 34% Viscose  
2% Spandex 205gsm  
Sizes: 6-20

ESS.CJK005-820 - Navy  
ESS.CJK005-998 - Black



**TOULOUSE COLLARLESS JACKET**  
64% Polyester 34% Viscose  
2% Spandex 205gsm  
Sizes: 6-20

ESS.CJK006-998 - Black



**AVA FLAT FRONT TROUSER**  
64% Polyester 34% Viscose  
2% Spandex 205gsm  
Sizes: 6-22

ESS.CTR005-820 - Navy  
ESS.CTR005-998 - Black



**GRACE TWIN PLEAT TROUSER**  
64% Polyester 34% Viscose  
2% Spandex 205gsm  
Sizes: 6-24

ESS.CTR006-998 - Black



**LAUREN SLIM LEG TROUSER**  
64% Polyester 34% Viscose  
2% Spandex 205gsm  
Sizes: 6-22

ESS.CTR009-998 - Black



**GRETA POLY VISCOSE DRESS**  
64% Polyester 34% Viscose  
2% Spandex 205gsm  
Sizes: 6-20

ESS.DRS002-820 - Navy  
ESS.DRS002-998 - Black



**ARIA JOGGER TROUSER**  
64% Polyester 34% Viscose  
2% Spandex 205gsm  
Sizes: 6-22

ESS.PNT001-820 - Navy  
ESS.PNT001-998 - Black



**JULIA SLIM LINE 68CM STRAIGHT SKIRT**  
64% Polyester 34% Viscose  
2% Spandex 205gsm  
Sizes: 6-22

ESS.SKT003-820 - Navy  
ESS.SKT003-998 - Black



**JULIETTE SLIM LINE 58CM STRAIGHT SKIRT**  
64% Polyester 34% Viscose  
2% Spandex 205gsm  
Sizes: 6-22

ESS.SKT006-998 - Black



**ANNALISA A-LINE SKIRT**  
64% Polyester 34% Viscose  
2% Spandex 205gsm  
Sizes: 6-22

ESS.SKT007-998 - Black



Essence Suiting - Women



**EMMA UTILITY STRAIGHT SKIRT**  
64% Polyester 34% Viscose  
2% Spandex 205gsm  
Sizes: 6-22

ESS.SKT008-820 - Navy



**ISABELLA PLEATED SKIRT**  
64% Polyester 34% Viscose  
2% Spandex 205gsm  
Sizes: XS-3XL

ESS.SKT009-998 - Black

Essence Suiting - Men



**PAOLO SUIT JACKET**  
64% Polyester 34% Viscose  
2% Spandex 205gsm  
Sizes: 92R-112R

ESS.CJK001-820 - Navy  
ESS.CJK001-998 - Black



**MARCO TWIN PLEAT TROUSER**  
64% Polyester 34% Viscose  
2% Spandex 205gsm  
Sizes: 77R-117R

ESS.CTR001-998 - Black



**CARLO FLAT FRONT TROUSER**  
64% Polyester 34% Viscose  
2% Spandex 205gsm  
Sizes: 77R-117R

ESS.CTR003-820 - Navy  
ESS.CTR003-998 - Black

Chino Suiting - Women



**ISLA CHINO JACKET**  
Cotton rich stretch twill  
58% Cotton 40% Polyester  
2% Spandex 235gsm  
Sizes: 8-22

DEA.CJK001-242 - Walnut  
DEA.CJK001-820 - Navy  
DEA.CJK001-998 - Black



**LUNA CHINO SKIRT**  
Cotton rich stretch twill  
58% Cotton 40% Polyester  
2% Spandex 235gsm  
Sizes: 6-22

DEA.SKT003-242 - Walnut  
DEA.SKT003-820 - Navy  
DEA.SKT003-998 - Black



**LIA CHINO TROUSERS**  
Cotton rich stretch twill  
58% Cotton 40% Polyester  
2% Spandex 235gsm  
Sizes: 6-22

DEA.PNT027-242 - Walnut  
DEA.PNT027-820 - Navy  
DEA.PNT027-998 - Black

Chino Suiting - Men



**LEO CHINO JACKET**  
Cotton rich stretch twill  
58% Cotton 40% Polyester  
2% Spandex 235gsm  
Sizes: 92R-112R

DEA.CJK002-242 - Walnut  
DEA.CJK002-820 - Navy  
DEA.CJK002-998 - Black



**LOGAN CHINO TROUSERS**  
Cotton rich stretch twill  
58% Cotton 40% Polyester  
2% Spandex 235gsm  
Sizes: 77R - 117R

DEA.PNT026-242 - Walnut  
DEA.PNT026-820 - Navy  
DEA.PNT026-998 - Black



## Woolblend Suiting - Women



**LOUISE JACKET**

Wool blend twill  
58% Trevira 40% Wool  
2% Micro Stretch 215gsm  
Sizes: 8-20

WLB.CJK004-921 - Charcoal  
WLB.CJK004-998 - Black



**LAUREN SLIM LEG TROUSER**

Wool blend twill  
58% Trevira 40% Wool  
2% Micro Stretch 215gsm  
Sizes: 6-24

WLB.CTR010-921 - Charcoal  
WLB.CTR010-998 - Black



**JULIETTE SLIM LINE 58CM STRAIGHT SKIRT**

Wool blend twill  
58% Trevira 40% Wool  
2% Micro Stretch 215gsm  
Sizes: 6-22

WLB.SKT003-921 - Charcoal  
WLB.SKT003-998 - Black



**GLORIA FLAT FRONT TROUSER**

Wool blend twill  
58% Trevira 40% Wool  
2% Micro Stretch 215gsm  
Sizes: 6-20

WLB.CTR009-921 - Charcoal  
WLB.CTR009-998 - Black



**JULIA SLIM LINE 68CM STRAIGHT SKIRT**

Wool blend twill  
58% Trevira 40% Wool  
2% Micro Stretch 215gsm  
Sizes: 6-22

WLB.SKT001-921 - Charcoal  
WLB.SKT001-998 - Black

## Woolblend Suiting - Men



**STEFANO SUIT JACKET**

58% Trevira 40% Wool  
2% Micro Stretch 215gsm  
Sizes: 92R-108R

WLB.CJK006-921 - Charcoal  
WLB.CJK006-998 - Black



**RENZO DARTED FRONT TROUSER**

58% Trevira 40% Wool  
2% Micro Stretch 215gsm  
Sizes: 77R-107R

WLB.CTR008-921 - Charcoal  
WLB.CTR008-998 - Black

## Soft Suiting - Women



**FLAT FRONT TROUSER**

100% Easy Care Polyester 195gsm  
Sizes: 6-24

SSU.CTR005-820 - Navy  
SSU.CTR005-998 - Black



**CROPPED TROUSER**

100% Easy Care Polyester 195gsm  
Sizes: 6-24

SSU.TSR003-820 - Navy



**TWIN PLEAT TROUSER**

100% Easy Care Polyester 195gsm  
Sizes: 6-24

SSU.CTR006-820 - Navy  
SSU.CTR006-998 - Black



**TWIN PLEAT SHORT**

100% Easy Care Polyester 195gsm  
Sizes: 6-24

SSU.SHO001-820 - Navy

## Soft Suiting - Men



**FLAT FRONT TROUSER**

100% Easy Care Polyester 195gsm  
Sizes: 72R-122R

SSU.CTR003-998 - Black



**TWIN PLEAT TROUSER**

100% Easy Care Polyester 195gsm  
Sizes: 72R-132R

SSU.CTR004-820 - Navy  
SSU.CTR004-998 - Black



Warmwear - Women



**MERINO DRAPE CARDIGAN**  
50% Merino 50% Acrylic  
Single Jersey Knit 12 gauge  
Sizes: XS-5XL

KNT.CDG007-998 - Black



**SCOOP NECK VEST**  
50% Merino 50% Acrylic  
Single Jersey Knit 12 gauge  
Sizes: XS-5XL

MER.VST004-820 - Navy  
MER.VST004-998 - Black



**SOFT SHELL JACKET**  
97% Polyester 3% Elastane Bonded Inner  
Membrane 330gsm  
Sizes: XS-4XL

OTW.JKT003-820 - Navy  
OTW.JKT003-998 - Black



**BUTTON UP CARDIGAN**  
50% Merino 50% Acrylic  
Single Jersey Knit 12 gauge  
Sizes: XS-5XL

KNT.CDG006-824 - French Navy  
KNT.CDG006-998 - Black



**MID LAYER JACKET**  
100% Polyester 280gsm  
Sizes: XS-4XL

OTW.JKT025-998 - Black



**SOFT SHELL VEST**  
97% Polyester 3% Elastane Bonded Inner  
Membrane 330gsm  
Sizes: XS-4XL

OTW.VST003-820 - Navy  
OTW.VST003-998 - Black

Warmwear - Men



**MID LAYER JACKET**  
100% Polyester 280gsm  
Sizes: XS-4XL

OTW.JKT024-998 - Black



**SOFT SHELL VEST**  
97% Polyester 3% Elastane Bonded Inner  
Membrane 330gsm  
Sizes: XS-6XL

OTW.VST002-820 - Navy  
OTW.VST002-998 - Black



**SOFT SHELL JACKET**  
97% Polyester 3% Elastane Bonded Inner  
Membrane 330gsm  
Sizes: XS-5XL

OTW.JKT002-820 - Navy  
OTW.JKT002-998 - Black

Warmwear - Unisex



**UNISEX V-NECK JERSEY**  
80% Wool 20% Nylon 14 gauge  
Sizes: 2XS-5XL

KNT.JSY004-820 - Navy  
KNT.JSY004-998 - Black



**UNISEX V-NECK VEST**  
80% Wool 20% Nylon 14 gauge  
Sizes: 2XS-5XL

KNT.VST003-820 - Navy  
KNT.VST003-998 - Black



Healthcare - Women’s Tops



**IRIS 3/4 SLEEVE BLOUSE**  
55% Polyester 45% Recycled Polyester  
120gsm  
Sizes: 6-26

HEA.BLS009-091 - Sea Breeze Print Estate Blue  
HEA.BLS009-092 - Flora Print Hydro Teal  
HEA.BLS009-584 - Hydro Teal  
HEA.BLS009-834 - Estate Blue



**JASMINE SHORT SLEEVE TOP**  
55% Polyester 45% Recycled Polyester  
120gsm  
Sizes: 6-26

HEA.TUN022-091 - Sea Breeze Print Estate Blue  
HEA.TUN022-092 - Flora Print - Hydro Teal  
HEA.TUN022-584 - Hydro Teal  
HEA.TUN022-834 - Estate Blue



**OASIS SHORT SLEEVE SHIRT**  
100% Comfort Cool Polyester  
Sizes: 6-26

BIN.BLS025-583 - Teal  
BIN.BLS025-820 - Navy  
BIN.BLS025-640 - Cherry  
BIN.BLS025-851 - Electric Blue



**OASIS SHORT SLEEVE OVERBLOUSE**  
100% Comfort Cool Polyester  
Sizes: 6-30

BIN.TOP001-583 - Teal  
BIN.TOP001-640 - Cherry  
BIN.TOP001-851 - Electric Blue



**CREW POLO**  
65% Polyester 35% Cotton Pique 210gsm  
Sizes: 8-24

DEA.POL077-583 - Teal  
DEA.POL077-620 - Red  
DEA.POL077-820 - Navy  
DEA.POL077-830 - Royal



**POPPY SHORT SLEEVE TUNIC**  
55% Polyester 45% Recycled Polyester  
120gsm  
Sizes: 6-26

HEA.BLS008-091 - Sea Breeze Print Estate Blue  
HEA.BLS008-092 - Flora Print - Hydro Teal  
HEA.BLS010-584 - Hydro Teal  
HEA.BLS010-834 - Estate Blue



**PRIMROSE SHORT SLEEVE TOP**  
95% Polyester 5% Spandex Knit 255gsm  
Sizes: XS-2XL

HEA.TOP007-584 - Hydro Teal  
HEA.TOP007-834 - Estate Blue



**OASIS 3/4 SLEEVE SHIRT**  
100% Comfort Cool Polyester  
Sizes: 6-26

BIN.BLS022-583 - Teal  
BIN.BLS022-820 - Navy  
BIN.BLS022-640 - Cherry  
BIN.BLS022-851 - Electric Blue



**AERO POLO SHIRT**  
100% Cotton Feel Polyester 160gsm  
Sizes: 6-24

BIN.POL111-583 - Teal  
BIN.POL111-820 - Navy  
BIN.POL111-620 - Red  
BIN.POL111-851 - Electric Blue



**V-NECK SCRUB TOP**  
96% Polyester 4% Elastane  
Sizes: S-5XL

BIN.TOP031-583 - Teal  
BIN.TOP031-820 - Navy  
BIN.TOP031-851 - Electric Blue

Healthcare - Women’s Tops



**DAHLIA SHORT SLEEVE TUNIC**  
65% Polyester 35% Viscose Twill  
Anti-Microbial Finish 195gsm  
Sizes: 6-26

HEA.TUN028-583 - Teal  
HEA.TUN028-830 - Royal

Healthcare - Women’s Bottoms



**STRAIGHT LEG SCRUB PANT**  
96% Polyester 4% Elastane  
Sizes: S-5XL

BIN.PNT042-583 - Teal  
BIN.PNT042-820 - Navy  
BIN.PNT042-851 - Electric Blue



**SHORTS**  
55% Cotton 45% Polyester Mechanical  
Stretch 160gsm  
Sizes: 6-30

HEA.SHO001-820 - Navy  
HEA.SHO001-998 - Black



**FLAT FRONT TROUSER**  
55% Cotton 45% Polyester Mechanical  
Stretch 160gsm  
Sizes: 6-28

HEA.TSR007-820 - Navy  
HEA.TSR007-998 - Black



**A-LINE SKIRT**  
55% Cotton 45% Polyester Mechanical  
Stretch 160gsm  
Sizes: 6-28

HEA.SKT001-820 - Navy  
HEA.SKT001-998 - Black



**3/4 LENGTH TROUSER**  
55% Cotton 45% Polyester Mechanical  
Stretch 160gsm  
Sizes: 6-28

HEA.TSR005-820 - Navy  
HEA.TSR005-998 - Black



Healthcare - Men’s Shirts



OASIS SHORT SLEEVE SHIRT

100% Comfort Cool Polyester  
Sizes: S-3XL, 5XL

DEA.SHR018-583 - Teal  
DEA.SHR018-820 - Navy  
DEA.SHR018-640 - Cherry  
DEA.SHR018-851 - Electric Blue



ELM SCRUB TOP

65% Polyester 35% Viscose  
Twill Anti-Microbial Finish 195gsm  
Sizes: 2XS-4XL

HEA.TOP011-583 - Teal  
HEA.TOP011-830 - Royal



AERO POLO SHIRT

100% Cotton Feel Polyester 160gsm  
Sizes: XS-5XL

BIN.POL110-851 - Electric Blue  
BIN.POL110-583 - Teal  
BIN.POL110-820 - Navy  
BIN.POL110-620 - Red



CREW POLO

65% Polyester 35% Cotton Pique 210gsm  
Sizes: XS-5XL

DEA.POL078-583 - Teal  
DEA.POL078-620 - Red  
DEA.POL078-820 - Navy  
DEA.POL078-830 - Royal



V-NECK SCRUB TOP

96% Polyester 4% Elastane  
Sizes: XS-5XL

BIN.TOP032-583 - Teal  
BIN.TOP032-820 - Navy  
BIN.TOP032-851 - Electric Blue

Healthcare - Men’s Bottoms



SCRUB PANT

96% Polyester 4% Elastane  
Sizes: XS-5XL

BIN.PNT043-583 - Teal  
BIN.PNT043-820 - Navy  
BIN.PNT043-851 - Electric Blue



FLAT FRONT TROUSER

55% Cotton 45% Polyester Mechanical  
Stretch 160gsm

Sizes: 77R-132R  
HEA.TSR008-998 - Black

Sizes: 72R-142R  
HEA.TSR008-820 - Navy

Hospitality / Casual



WOMEN’S MAPLE T-SHIRT

100% Cotton 160gsm  
Sizes: XS-XL

BIN.TEE033-018 - Black & White  
BIN.TEE033-043 - Red & White  
BIN.TEE033-103 - Green & White  
BIN.TEE033-802 - Navy & White



WOMEN’S MALI T-SHIRT

100% Cotton 150gsm  
XS to 2XL

BIN.TEE008-122 - White



MEN’S STAPLE T-SHIRT

100% Cotton 160gsm  
Sizes: S-2XL

BIN.TEE032-018 - Black & White  
BIN.TEE032-043 - Red & White  
BIN.TEE032-103 - Green & White  
BIN.TEE032-802 - Navy & White



MEN’S SHADOW T-SHIRT

100% Cotton 150gsm  
Sizes: S-2XL

BIN.TEE007-122 - White



REVERSIBLE DENIM  
FULL APRON

70% Cotton 30% Polyester 330gsm  
Sizes: M

DEA.APR011-998 - Black / Silver



REVERSIBLE DENIM  
HALF APRON

70% Cotton 30% Polyester 330gsm  
Sizes: M

DEA.APR010-998 - Black / Silver



ADAPTABLE DENIM  
FULL APRON

Sizes: M

Indigo Apron

73% Cotton 27% Polyester 270gsm  
DEA.APR015-848

Latte Apron

65% Polyester 35% Cotton Canvas 250gsm  
DEA.APR014-261



# SIZE GUIDE

**A - Women:** Oasis ¾ Sleeve, Oasis Short Sleeve, Oasis Overblouse, Aero Polo, Crew Polo, Maple T-Shirt

Sizes	XS		S		M	L		XL	2XL		3XL
	6	8	10	12	14	16	18	20	22	24	26
Bust (cm)	72	82	87	92	97	102	107	112	117	122	127

**B - Women:** All Other Garments

Sizes	2XS		XS	S		M	L		XL	2XL		3XL	4XL
	4	6	8	10	12	14	16	18	20	22	24	26	28
Bust (cm)	77	82	87	92	97	102	107	112	117	122	127	132	137
Waist (cm)	60	65	70	75	80	85	90	95	100	105	110	115	120
Hip (cm)	85	90	95	100	105	110	115	120	125	130	135	140	145

**A - Men:** Staple T-Shirt

Sizes	XS	S	M	L	XL	2XL	3XL	4XL	5XL
Neck (cm)	33-34	35-36	37-38	39-40	41-42	43-44	45-46	47-48	49-50
Chest (cm)	78	80	88	96	104	112	120	128	136

**B - Men:** All Other Garments

Sizes	XS	S	M	L	XL	2XL	3XL	4XL	5XL	6XL
-------	----	---	---	---	----	-----	-----	-----	-----	-----

**Shirts, Polos and Knitwear**

Neck (cm)	35-36	37-38	39-40	41-42	43-44	45-46	47-48	49-50	51-52	53-54
Chest (cm)	80	88	96	104	112	120	128	136	144	152

**Trousers**

Waist (cm)	77	82	87	92	97	102	107	112	117	122
Waist (inches)	30	32	34	36	38	40	42	44	46	48

**Jackets**

Chest (cm)	92	96	100	104	108	112	116	120
------------	----	----	-----	-----	-----	-----	-----	-----

**How To Measure**

- Keep the tape measure straight, level & snug, but not tight
- If the measurement is on the borderline, choose the larger size
- Measure over underwear or light clothing
- Keep your body standing upright

**Chest / Bust:** Measure under your arms around the fullest part, with your arms at your sides.

**Waist:** Measure around the natural waistline, keeping the tape comfortable loose.

**Hip:** Measure around the fullest part of your hips while standing upright.

